



BTG Concrete pipe lifting gear

Capacity 1500 - 3000 kg

Lifting gear for the vertical transport of concrete pipe and culverts must be very versatile. Most important, it must be absolutely safe and easy to handle under even the harshest conditions.

The Tigrip concrete pipe lifting gear meets all these requirements. It is a three legged lifting system for the safe and non-marring transport of concrete pipes up to a diameter of Ø 2000 mm and a load of up to 3 t.

The jaw capacity is designed for concrete pipe thicknesses from 40 - 220 mm.

Attachment and removal of the clamps can be done easily due to the handles that have been incorporated into each clamp.

Features

- Solid design
- Safety factor 4:1
- Simple and safe handling
- Large jaw capacity
- For the toughest operating conditions
- Lightweight design
- Service-friendly

INFO

For concrete pipes according to DIN 4034.

Lifting gear for concrete pipe up to a diameter of Ø 3000 mm available on request!



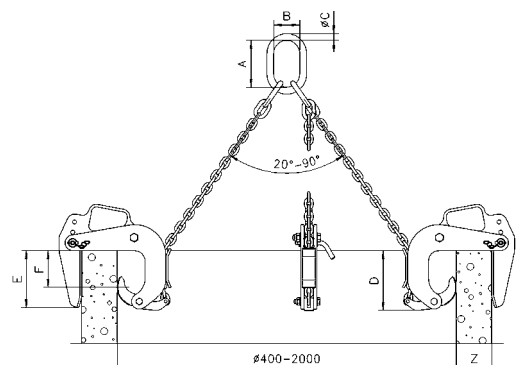
Technical data BTG

Model	Art.-No.	Capacity ¹ kg	Jaw capacity Z mm	Mouth depth E mm	Pressure line F mm	Chain Ø mm	Weight kg
BTG 1,5/120	N54609200	1500	40 - 120	165	100	6	35
BTG 3,0/180 TM-N	N54609204	3000	50 - 180	245	175	10	90
BTG 3,0/220 TM-N	N54609206	3000	90 - 220	245	175	10	94

¹Per lifting gear - three legged

Dimensions BTG

Model	BTG 1,5/120	BTG 3,0/180 TM-N	BTG 3,0/220 TM-N
A, mm	135	180	180
B, mm	75	100	100
Ø C, mm	18	26	26
D, mm	180	310	310



TCP
Trench shield grab

Capacity 1500 - 5500 kg

The TCP grab is suitable for vertical positioning and transportation of trench shields.

Once the grab is set onto the trench shield, a spring-loaded bolt locks itself into the hole of the shield. Releasing the bolt is done with the 15 m pull cord attached to the grab.

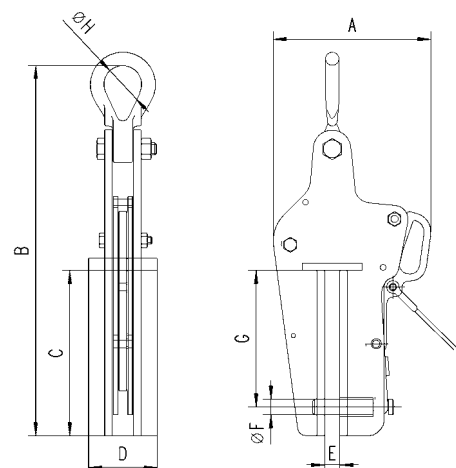


Technical data TCP

Model	Art.-No.	Capacity kg	Weight kg
TCP 1,5	N56000001	1500	12.2
TCP 3,0	N56000002	3000	19.5
TCP 5,5	N56000003	5500	26.7

Dimensions TCP

Model	TCP 1,5	TCP 3,0	TCP 5,5
A, mm	207	226	269
B, mm	488	517	575
C, mm	218	218	218
D, mm	90	100	120
E, mm	18	24	24
Ø F, mm	20	24	30
G, mm	180	180	180
Ø H, mm	50	63	89





TPP

Trench shield clamp

Capacity 3000 - 8000 kg

The TPP trench shield clamp is similar to a regular plate clamp in its construction but has a much deeper jaw.

The compact construction combined with a high capacity makes it ideal for pulling trench shields out of the ground.

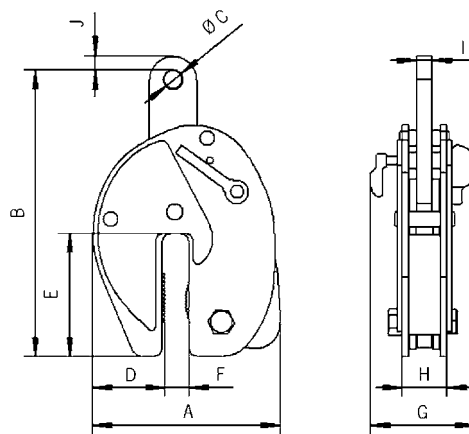
A safety lock prevents the accidental opening of the clamp.

Technical data TPP

Model	Art.-No.	Capacity kg	Jaw capacity mm	Weight kg
TPP 3	N51502418	3000	0 - 16	16.0
TPP 8	N51502416	8000	0 - 30	27.8

Dimensions TPP

Model	TPP 3	TPP 8
A, mm	224	294
B, mm	325	445
Ø C, mm	20	30
D, mm	88	109
E, mm	147	194
F, mm	25	42
G, mm	123	146
H, mm	60	72
I, mm	20	25
J, mm	18	26



TRO

Pipe hook

Capacity 2000 - 10000 kg

The pipe hooks are used in pairs for the safe transport of pipes.

Scope of delivery

The shackles are included with the hooks.

Technical data TRO für 60° - 90° chain-top angle

Model	Art.-No.	Capacity ¹ kg	Weight ¹ kg
TRO 2/90	N53508004	2000	3.1
TRO 4/90	N53508005	4000	5.6
TRO 6/90	N53508006	6000	10.5
TRO 8/90	N53508007	8000	17.8
TRO 10/90	N53508008	10000	22.0

¹Per pair

Dimensions TRO für 60° - 90° chain-top angle

Model	TRO 2/90	TRO 4/90	TRO 6/90	TRO 8/90	TRO 10/90
t, mm	20	30	30	40	40
A, mm	0 - 40	0 - 50	0 - 60	0 - 70	0 - 80
B, mm	35	40	51	55	69
C, mm	40	48	62	67	80
D, mm	62	77	90	105	115
E, mm	62	77	90	105	115
F, mm	116	142	173	190	221
Ø G, mm	16.3	24.3	24.3	30.3	30.3
H, mm	47.6	72.2	72.2	95.3	95.3
Ø I, mm	12.7	19	19	25.4	25.4
J, mm	30.2	44.5	44.5	58.7	58.7

